

DGR 201/204 Connecting Remotely with a Dynamic IP Address

Bulletin No: 05-1811-1

Date: November 18, 2005

Product: DGR201/204

Purpose: To provide instructions for connecting remotely to the DGR201/204 with a dynamic public IP address

Introduction:

To connect to a Digimerge DGR201/204 remotely (via the Internet) it is necessary to have a high-speed Internet connection. Your Internet Service Provider will assign you either a static IP (internet protocol) address or a dynamic IP address. Static IP addresses do not change. Dynamic IP addresses do change. The frequency that a dynamic IP address changes is dependent on the Internet Service Provider. It may be a few hours, a few days, or even a few weeks.

In order to connect remotely when you have a dynamic IP address, it is necessary to know what that IP address is.

Procedure:

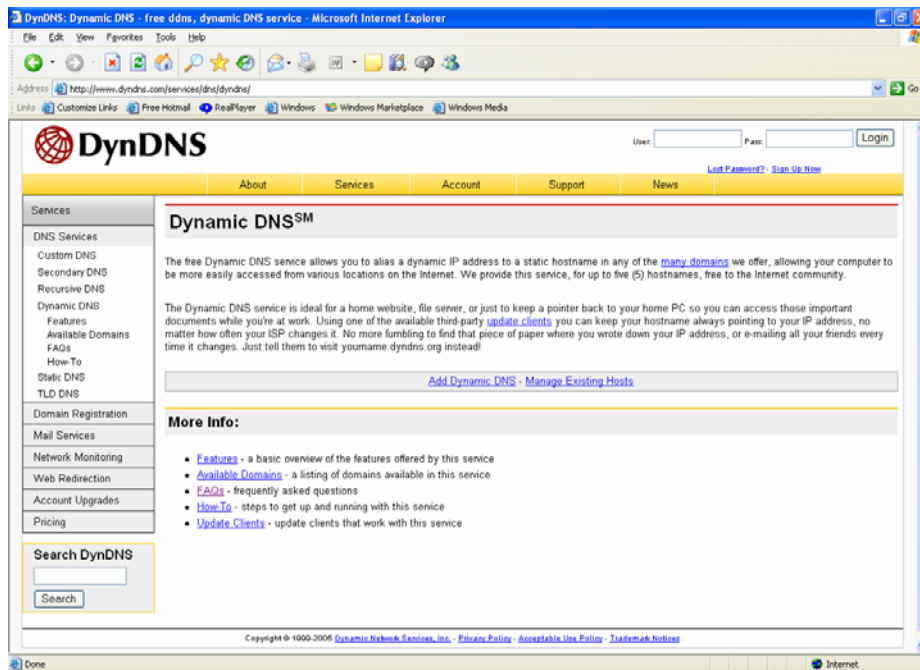
One way of keeping track of your dynamic IP address is to register a domain name with a DDNS service, and connecting your DGR201/204 to a router that supports DDNS and works with the DDNS service.

For this process to work, port forwarding must be configured on the router. (See Section 3 – Connecting to DVR)

1. Registering with a DDNS service

Two websites that provide DDNS services are listed below:

- <http://www.dyndns.org/services/dns/dyndns/> (Free service)
(follow the instructions in the "How-To" section.)



- <http://www.tzo.org> (Paid service)
(click on the “Products” link for more information)



2. Connecting DVR to a router that supports DDNS

After you have registered a domain name, you will need to ensure that this domain name is updated with your sites current IP address. This can be done by connecting the DVR to router that supports DDNS and works with the website you have registered with. **(The tzo.org website lists the routers that work with their service and instructions on how to configure the routers).**

The example below shows how to configure a Linksys WRT54G router.

a) Log into the router by typing the routers IP address in a web browser.

Note: If you do not know the IP address of the router, do the following from a Windows 2000 or XP computer that is connected to the router:

- Click on **Start**
- Click on **Run**
- In the Open box type **cmd** and click **OK**
- In the DOS window type **ipconfig** and press **Enter**
- The Default Gateway is the IP address of the router

```

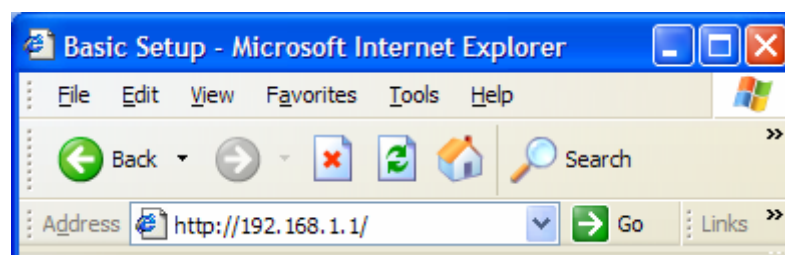
C:\WINDOWS\system32\cmd.exe
C:\>ipconfig

Windows IP Configuration

Ethernet adapter Local Area Connection:

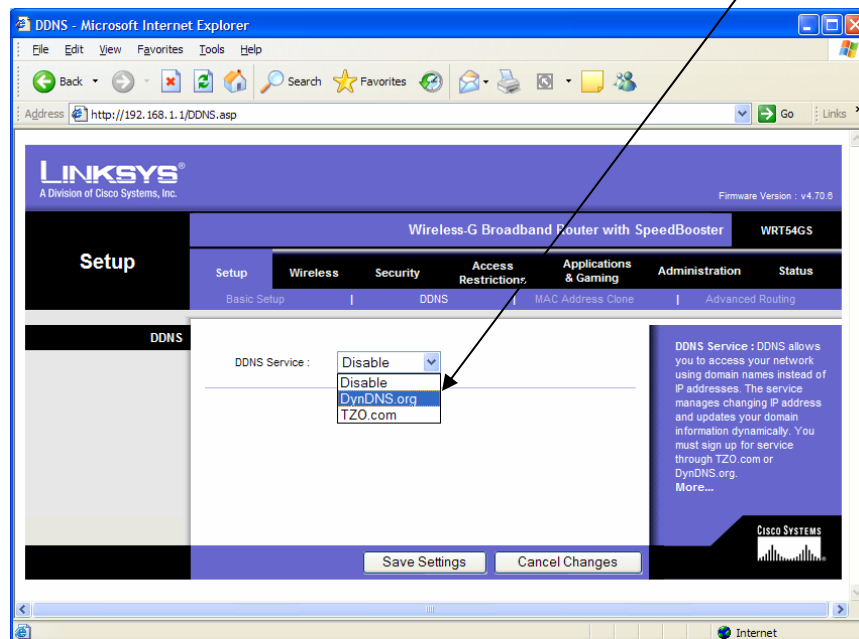
    Connection-specific DNS Suffix . . . :
    IP Address . . . . . : 192.168.1.202
    Subnet Mask . . . . . : 255.255.255.0
    Default Gateway . . . . . : 192.168.1.1
  
```

The default IP address for the Linksys WRT54G router is: 192.168.1.1



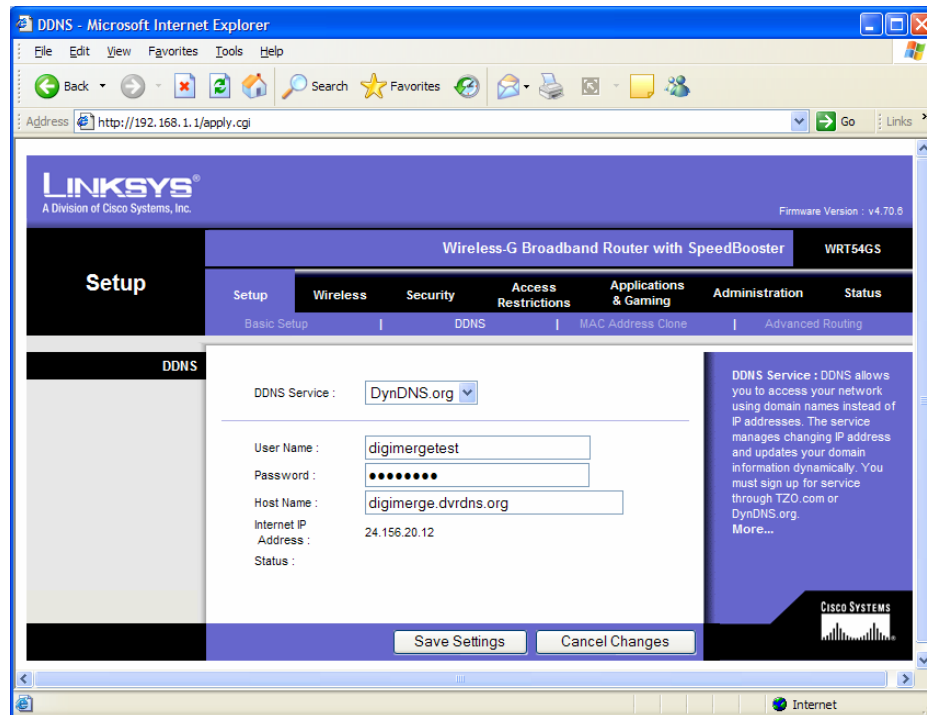


- b) Click on the DDNS tab of the router.
- c) From the DDNS Service drop down box, select and click on the DDNS Service that you are using.

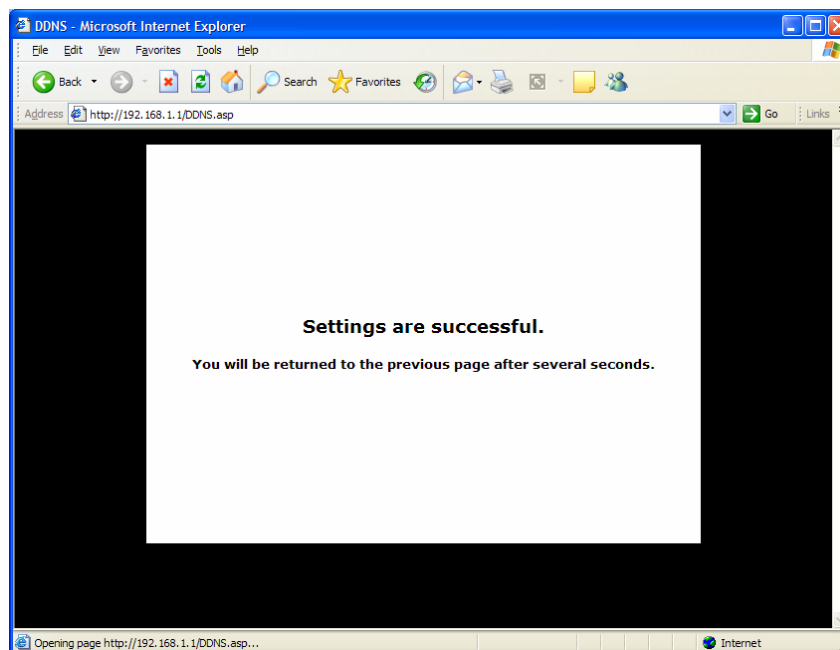


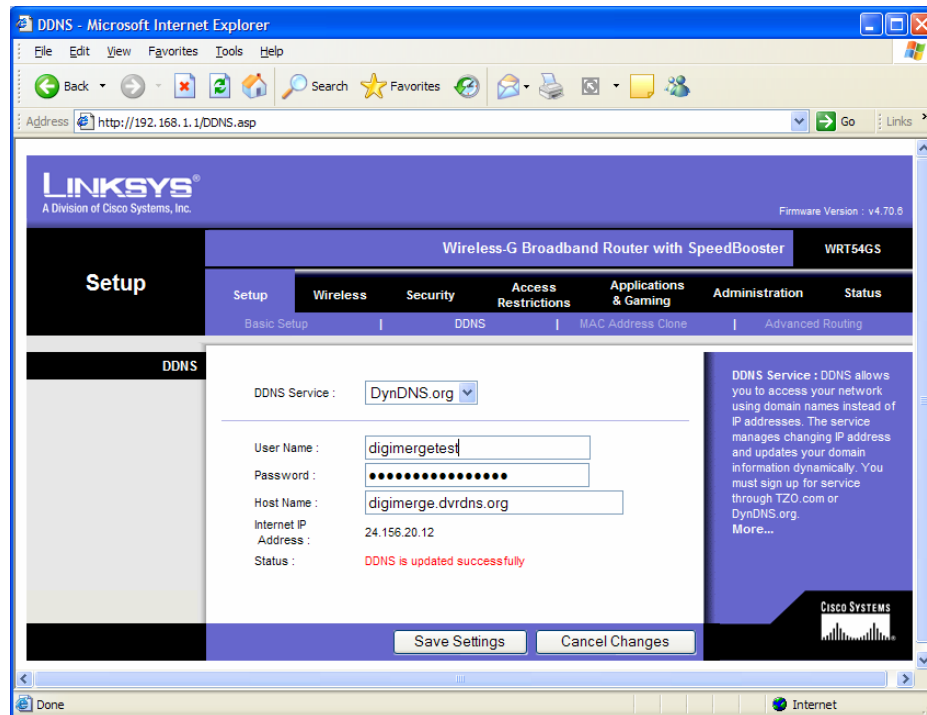
For DynDns.org complete the *User Name*, *Password*, and *Hostname* then click on *Save Settings*.

For TZO.com complete your *E-mail Address*, *Password* and *Domain Name* then click on *Save Settings*.



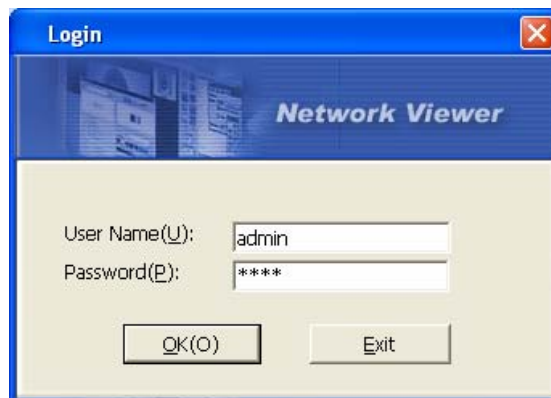
If the router successfully connected to your DDNS service the screen below will appear briefly, then you will be returned to the previous page, where *DNS is updated successfully* will appear on the bottom of the screen.





3. Connecting to the DGR201/204

- Open Network Viewer
- Enter : User Name (default – **admin**)
Password (default – **9999**)
- Press **OK**



- Highlight DVR 1 in Device Setup and in the Device section enter the following;

IP Address: The domain name registered with DynDns.org or TZO.com

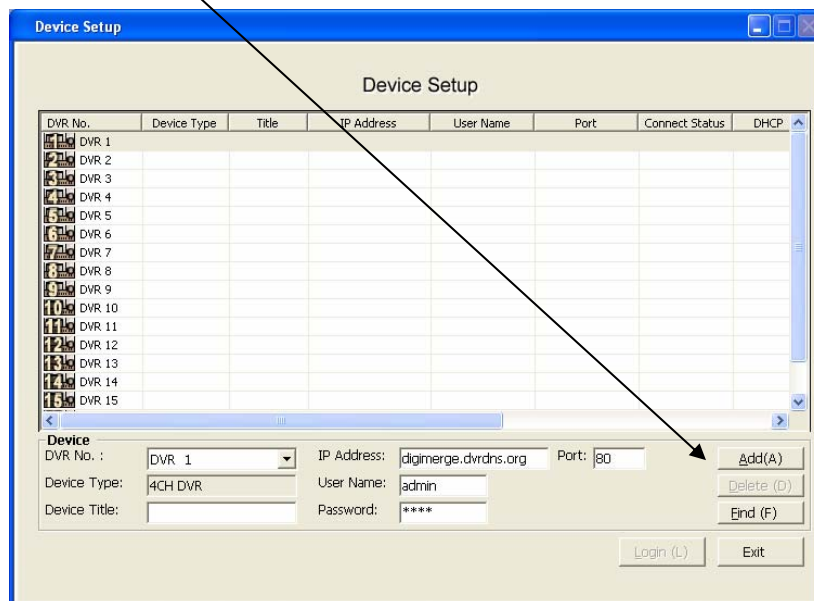
User Name: admin

Password: 9999 (default)

Port: 80 (default) *

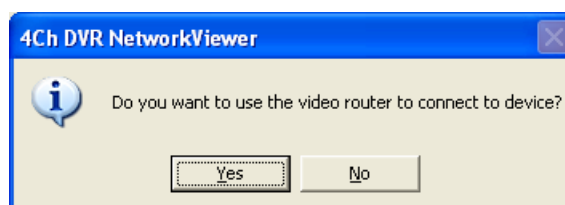
- * Port Forwarding needs to be configured on the router.
The DGR201/204 uses port 80 by default.
For more information refer to the Router Configuration Manual on the Digimerge website: [http:// www.digimerge.com](http://www.digimerge.com)
(Follow the links for North American Products→Networkable DVRs→DGR201/204 →Product Library→Manuals)

- Press *Add*.



A box will open asking "Do you want to use the video router to connect to the device?"

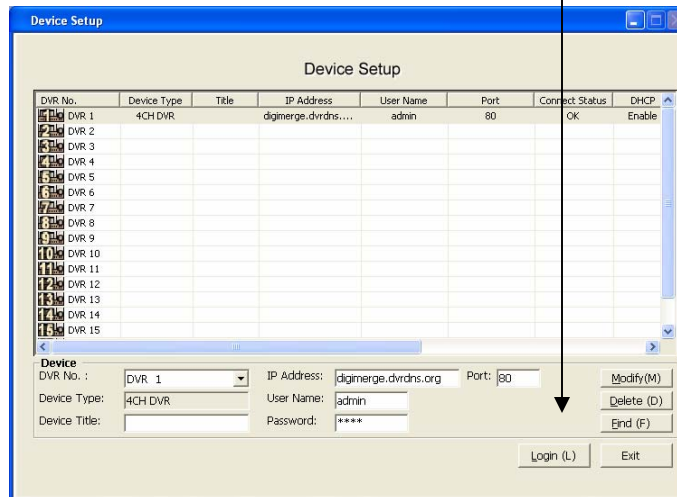
- Press *No*.



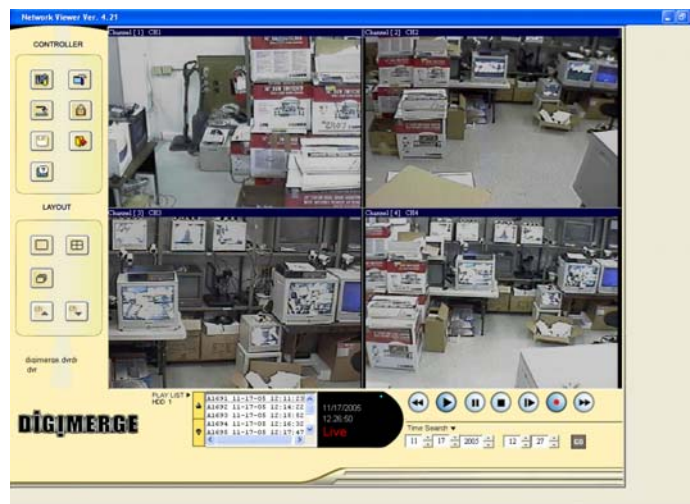
- The connection will be added under Device Setup. If there is a connection to the DVR the Connect Status will be “OK”

(If Connect Status says “Fail”, the login information is incorrect, there is no network connection to the DVR, or the DDNS is not configured correctly)

- When Connect Status is “OK” press *Login* to connect to the DGR201/204



- The cameras will display on the screen



Note: Digimerge does not support routers or the DDNS services DynDns.org or TZO.com. For support please contact your router manufacturer or the DDNS service.