

DHT304/404 Connecting Remotely with a Dynamic IP Address

Bulletin No: 05-1711-1

Date: November 17, 2005

Product : DHT304/404

Purpose: To provide instructions for connecting remotely to the DHT304/404 with a dynamic public IP address

Introduction:

To connect to a Digimerge DHT304/404 remotely (via the Internet) it is necessary to have a high-speed Internet connection. Your Internet Service Provider will assign you either a static IP (internet protocol) address or a dynamic IP address. Static IP addresses do not change. Dynamic IP addresses do change. The frequency that a dynamic IP address changes is dependent on the Internet Service Provider. It may be a few hours, a few days, or even a few weeks.

In order to connect remotely when you have a dynamic IP address, it is necessary to know what that IP address is.

Procedure:

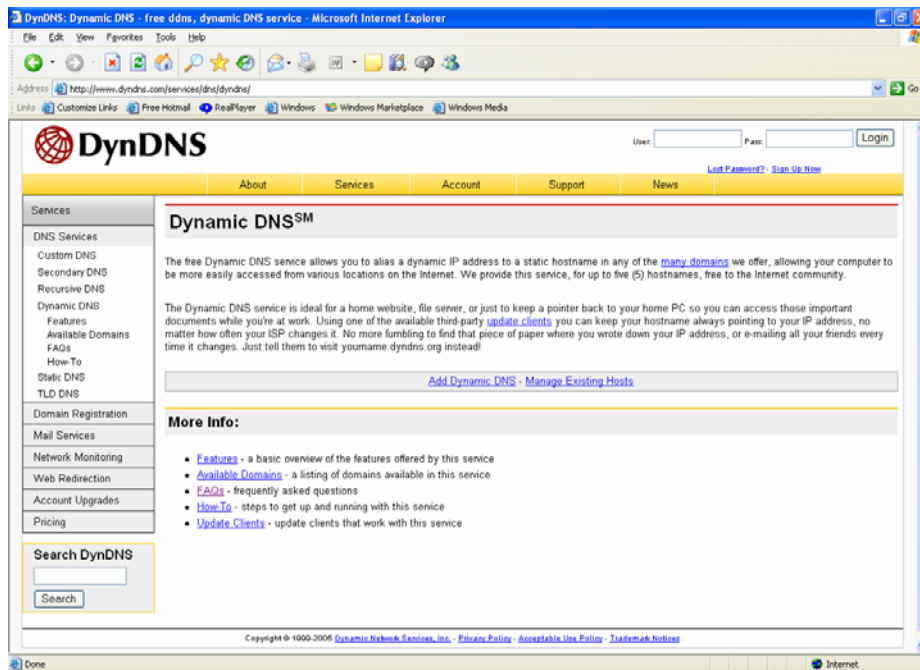
One way of keeping track of your dynamic IP address is to register a domain name with a DDNS service, and connecting your DHT304/404 to a router that supports DDNS and works with the DDNS service.

For this process to work, port forwarding must be configured on the router. (See Section 3 – Connecting to DVR)

1. Registering with a DDNS service

Two websites that provide DDNS services are listed below:

- <http://www.dyndns.org/services/dns/dyndns/> (Free service)
(follow the instructions in the "How-To" section.)



- <http://www.tzo.org> (Paid service)
(click on the “Products” link for more information)



2. Connecting DVR to a router that supports DDNS

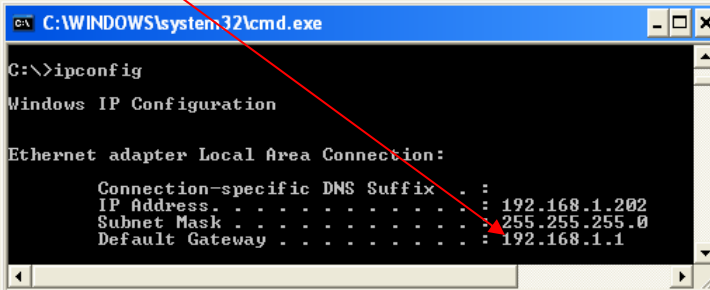
After you have registered a domain name, you will need to ensure that this domain name is updated with your sites current IP address. This can be done by connecting the DVR to router that supports DDNS and works with the website you have registered with. (**The tzo.org website lists the routers that work with their service and instructions on how to configure the routers**).

The example below shows how to configure a Linksys WRT54G router.

a) Log into the router by typing the routers IP address in a web browser.

Note: If you do not know the IP address of the router, do the following from a Windows 2000 or XP computer that is connected to the router:

- Click on **Start**
- Click on **Run**
- In the Open box type **cmd** and click **OK**
- In the DOS window type **ipconfig** and press **Enter**
- The Default Gateway is the IP address of the router

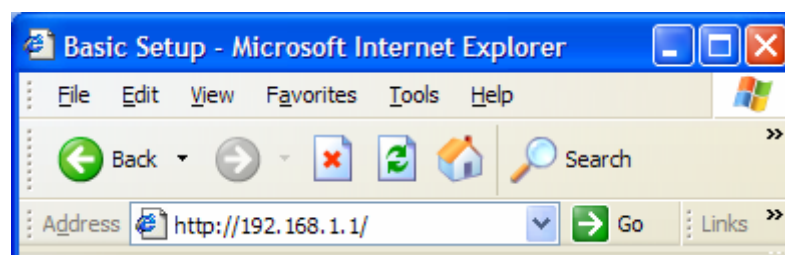


```
C:\WINDOWS\system32\cmd.exe
C:\>ipconfig
Windows IP Configuration

Ethernet adapter Local Area Connection:

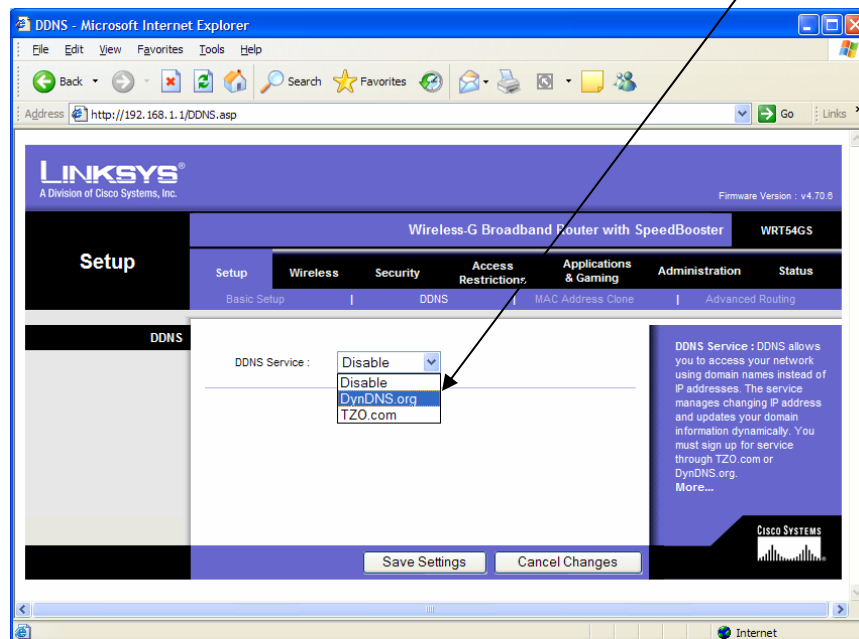
    Connection-specific DNS Suffix  . : 
    IP Address . . . . . : 192.168.1.202
    Subnet Mask . . . . . : 255.255.255.0
    Default Gateway . . . . . : 192.168.1.1
```

The default IP address for the Linksys WRT54G router is: 192.168.1.1



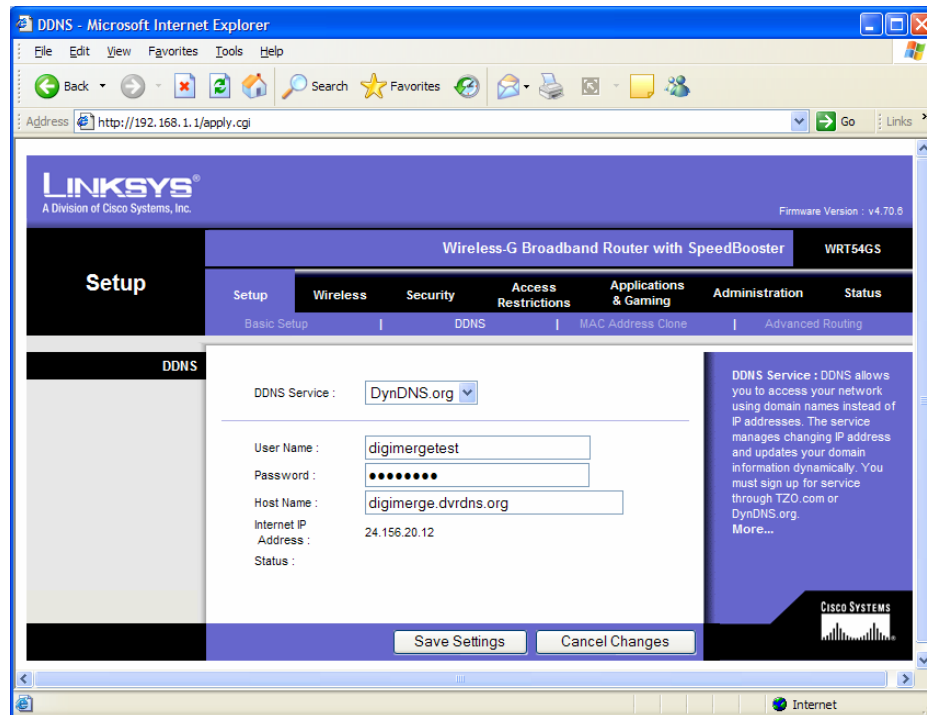


- b) Click on the DDNS tab of the router.
- c) From the DDNS Service drop down box, select and click on the DDNS Service that you are using.

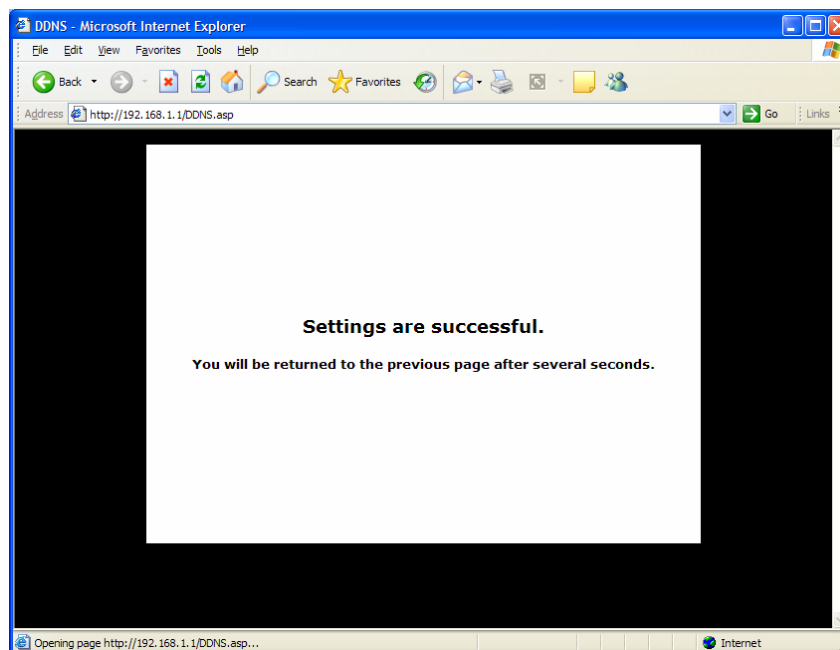


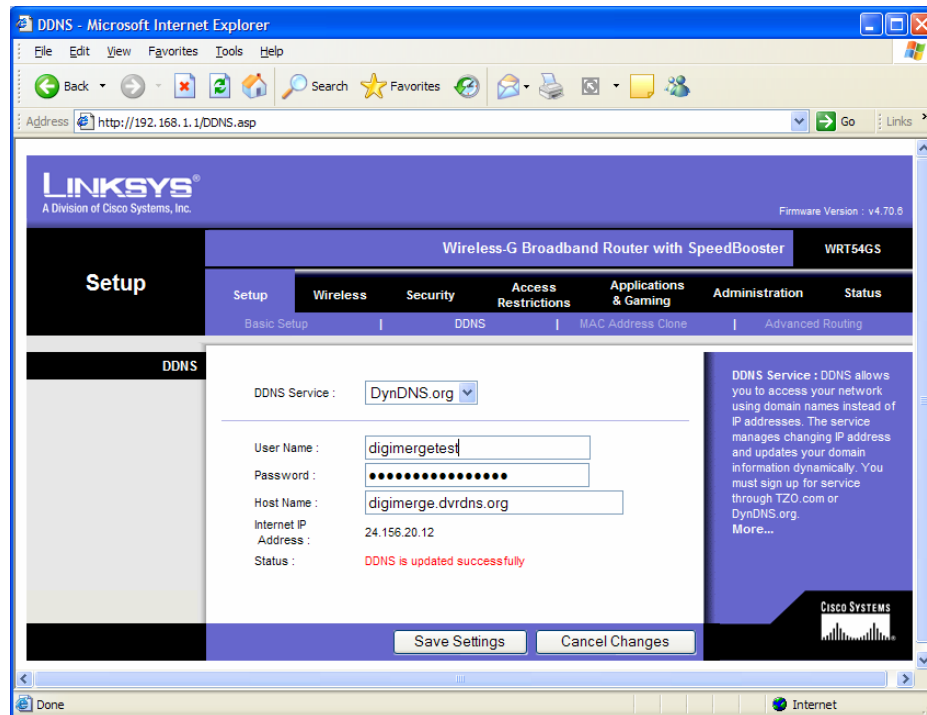
For DynDns.org complete the *User Name*, *Password*, and *Hostname* then click on *Save Settings*.

For TZO.com complete your *E-mail Address*, *Password* and *Domain Name* then click on *Save Settings*.




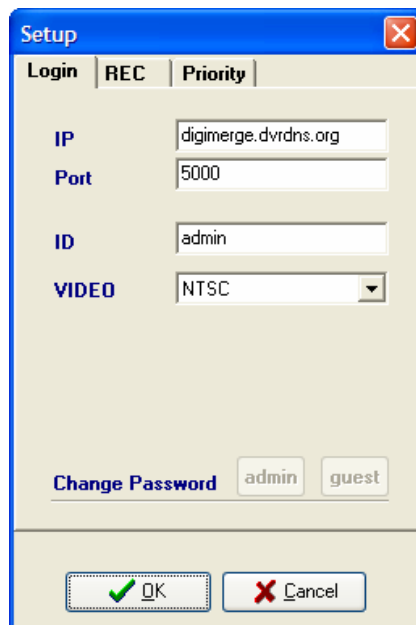
If the router successfully connected to your DDNS service the screen below will appear briefly, then you will be returned to the previous page, where *DNS is updated successfully* will appear on the bottom of the screen.





3. Connecting to the DHT304/404

- Open NetViewer and click on the Setup icon . A small setup window will appear.



- Type the domain name you registered with DynDns.org or TZO.com in the *IP* box. Enter the starting *Port* (default 5000)*, user *ID*, and *Video* format (NTSC for North America; PAL for Europe) and press *OK*.

* Port Forwarding needs to be configured on the router. The DHT 304/404 uses ports 5000-5003 by default. For more information refer to the Router Configuration Manual on the Digimerge website: [http:// www.digimerge.com](http://www.digimerge.com) (Follow the links for North American Products→Networkable DVRs→DHT304/404→Product Library→Manuals)



- To start viewing the cameras press the connect button.
- Enter *ID* and Enter *Password* and press *OK*.

- If the setup is done correctly the cameras will display on the screen.



Note: Digimerge does not support routers or the DDNS services DynDns.org or TZO.com. For support please contact your router manufacturer or the DDNS service.