

DIGIMERGE

Product FAQ

FAQ No: FAQ-080311-01

Date: March 11, 2008

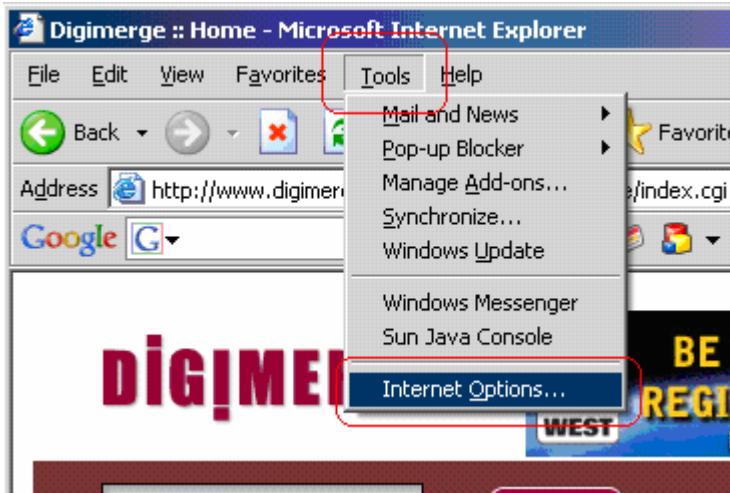
Product: DHU500R Series

Internet Explorer 6.0 ActiveX Settings for Remote Viewing

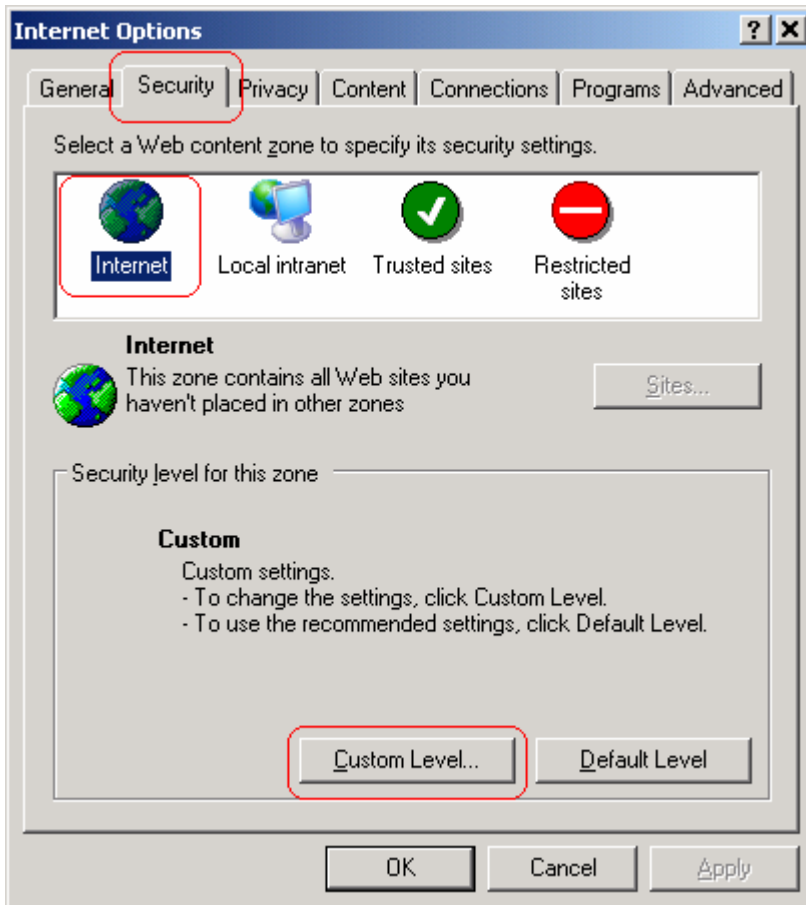
- If you are unable to connect to your DVR through Internet Explorer, you may need to check the following ActiveX settings in your Web Browser.
- Launch Internet Explorer on your computer.



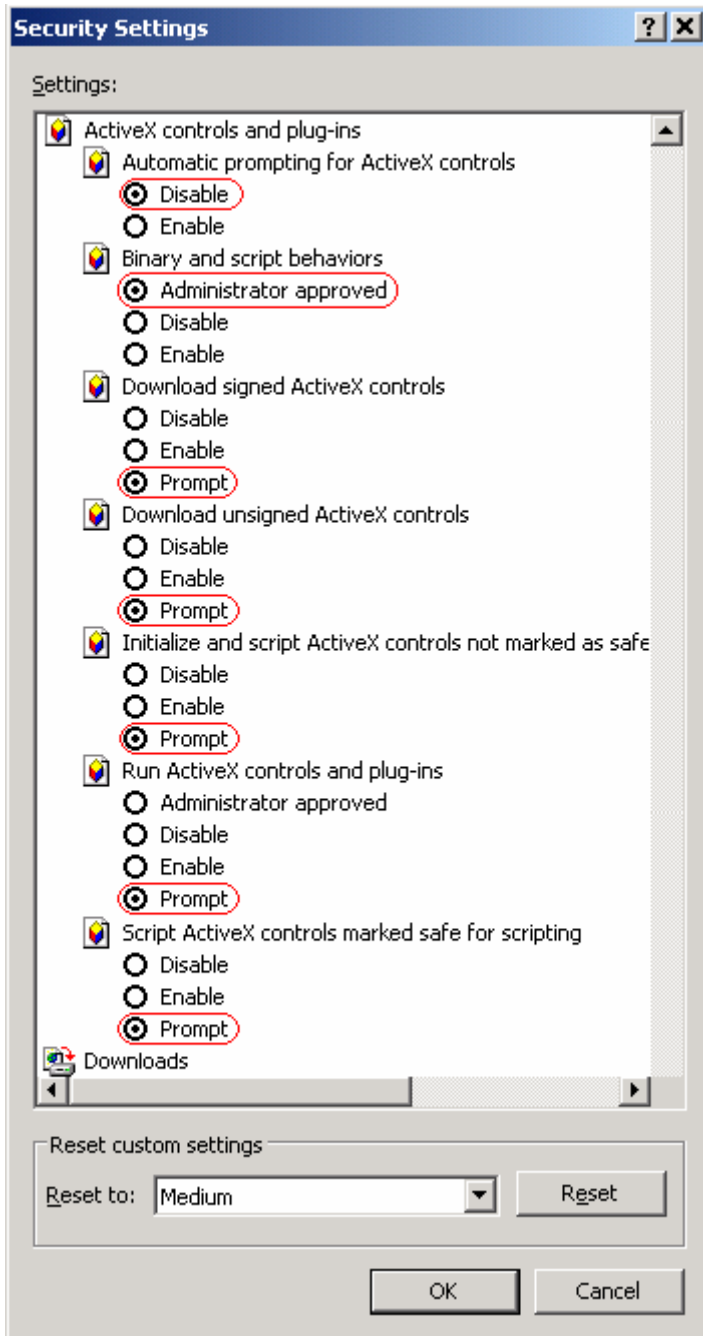
- Click into the “Tools” option at the top of the screen, and Select “Internet Options”.



- Click on the “Security” tab at the top, Select “Internet”, and then click on “Custom Level...” at the bottom.



- All of the options circled in red are the recommended settings for the Digimerge DHU500R Series

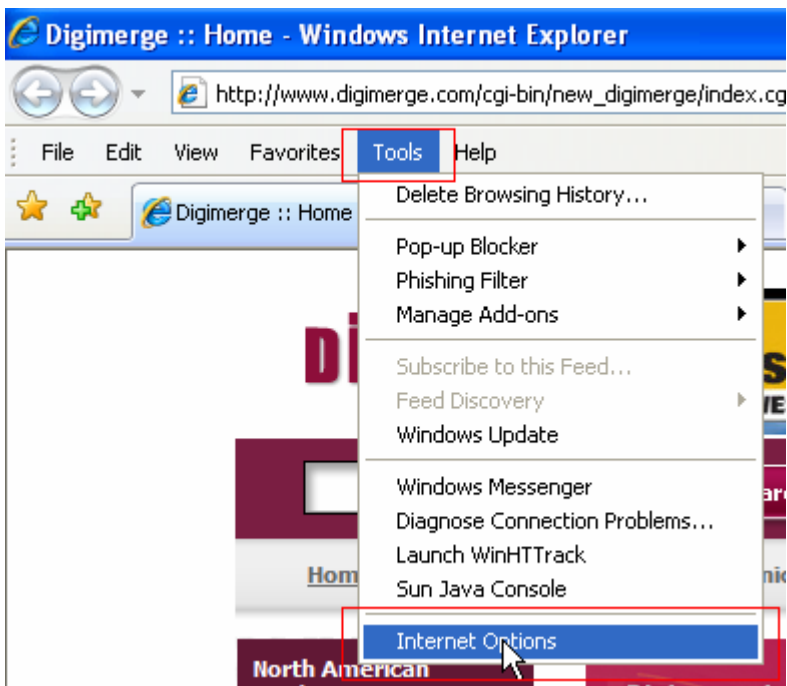


Internet Explorer 7.0 ActiveX Settings for Remote Viewing

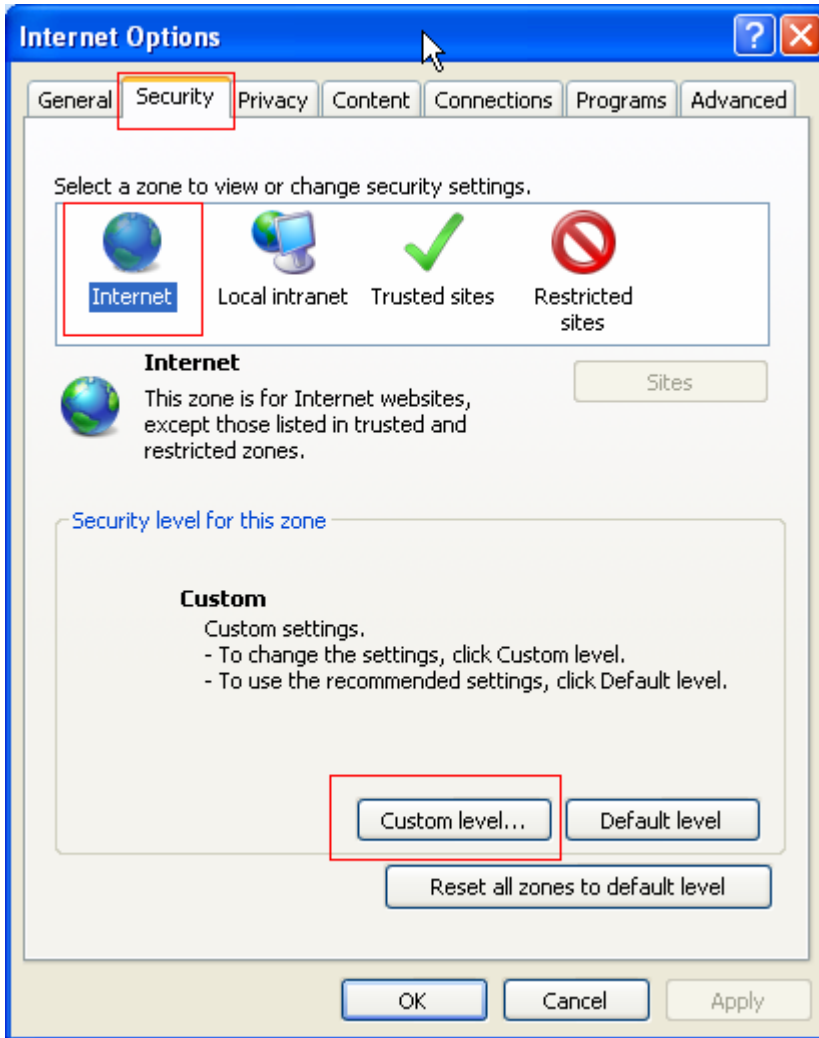
- Launch Internet Explorer on your computer.



- Click into the “Tools” option at the top of the screen, and Select “Internet Options”.



- Click on the “Security” tab at the top, Select “Internet”, and then click on “Custom Level...” at the bottom.



- All of the options circled in red are the recommended settings for the Digimerge DHU500R Series

