

Bulletin No: 08-0319-1

Release Date: March 19, 2008

Product: DHU500R Series

Purpose: To provide information about of how to install the new firmware.

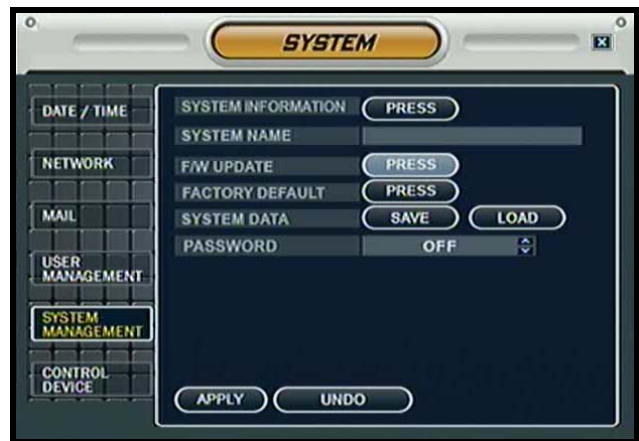
Procedure: If the system software of the DHU500R Series DVR needs to be upgraded, proceed with the steps outlined in “Step1 – Updating the Firmware with a USB Thumbstick”

Before you proceed read the entire document. Once you have completed Step 1, proceed to “Step 2 – Confirming the Firmware Version”

NOTE: This Firmware Upgrade will reset your DVR Unit to FACTORY DEFAULTS. Please save important settings BEFORE beginning this upgrade (refer to the manual for system backup instructions).

Step 1 – Updating the Firmware with a USB Thumbstick

1. Download the new firmware from the Digimerge website. Unzip the archive, and copy the file from the PC to the USB Memory Stick (filename: iDVR800T7.10.007.233ENCULPM.img).
2. Insert the Memory Stick into the System. Navigate to the Firmware Update section:
 - Press the SETUP button to enter the setup menu
 - Select the SYSTEM SETUP option
 - Select the SYSTEM menu
 - Select the SYSTEM MANAGEMENT option
 - Select the FW UPDATE option by selecting the PRESS button.



3. Select the START button to display the available firmware. The USB device will be recognized by the system, and the Firmware Information will be displayed:

- F/W Version (Should be Version 3.10.05.233ENCUTAPM)
- Language (Should display English)
- Option (Should display CD USB LCD)

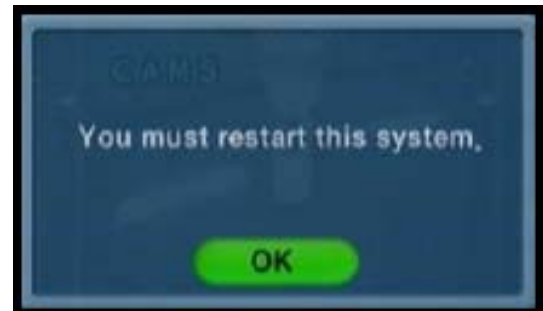


4. Select the Firmware and press ENTER. A prompt will appear confirming the Update.

5. Press OK to begin the update process.




The System must be restarted for the Changes to take effect. Press OK, and exit the Menu. The System will automatically Reboot.



NOTE: The System will need to be rebooted once the firmware has been updated for the new changes to take effect. When the unit is about to reboot, press and hold the REW and ENTER buttons together – only then will the firmware be accepted by the system. The DDNS Settings will need to be re-entered after the Firmware upgrade.

Step 2 – Confirming the Firmware Version

Once the Firmware has been successfully installed and the System has been rebooted, press the ENTER button on the front panel of the System (or on the Remote Control) to view the Firmware Version.



The image shows a screenshot of a system configuration menu. The menu is displayed on a dark background with light-colored text. It consists of a table with two columns: the left column contains the setting name, and the right column contains the current value. Below the table is a rounded rectangular button labeled 'OK'.

IP ADDRESS	127.0.0.1
MAC ADDRESS	00-11-5F-00-00-01
DISK CAPACITY	3 GB / 81 GB
F/W VERSION	3.10.05.233ENCUTCPM
VIDEO SIGNAL TYPE	NTSC
DDNS DOMAIN NAME	
NET CLIENT PORT	6100
WEB SERVER PORT	80

OK