

DHU500 SERIES MPEG4 NETWORKABLE DVR

*Model: DHU500 Series
DHU504/DHU508/DHU516*

Firmware Changes - Version 0906

English Version 1.0



DHU500 Series - Version 0906 Firmware Features

The following changes occur in the DHU500 unit after installing the new Firmware (version 0906):

- DVR MENU - Addition of the Auto Delete feature
- DVR MENU - Change to the Network Menu functionality:
 - Changes to the IP Set Menu
 - Changes to the DDNS Menu
- WEB CLIENT SOFTWARE - Addition of Remote Playback of Motion Events
- WEB CLIENT SOFTWARE - Change to the Remote System Setup menu

For additional information on the DHU500 unit and Firmware Updates, please visit us on the web at <http://www.digimerge.com>

Installing New Firmware

DVR Firmware Upgrade – Local Upgrade

1. Download the latest firmware from the Digimerge website at

http://www.digimerge.com/cgi-bin/new_digimerge/product.cgi?uid=215

** Confirm that you have downloaded the correct firmware to match your DVR type (either the DHU504 Firmware or the DHU508/516 Firmware) **

2. Extract the files from the ZIP archive. There will be 3 files:

- DHU504 Firmware
 - App-4ch_200609142137.bin
 - Cuboot-4ch.bin
 - Guram-4ch_200609142137.gz
- DHU508/516 Firmware
 - App-8,16ch_200609142137.bin
 - Cuboot-8,16ch_060829.bin
 - Guram-8,16ch_200609142137.gz

3. Copy the 3 extracted files to Memory Stick. Compatibility has been successfully tested with:

- Lexar Jumpdrive 128/256 MB
- Sandisk Mini Cruzer 128 MB
- Sandisk Cruzer Micro 256MB

4. Connect the Memory Stick to the USB 2.0 Port on the front panel of the DVR.

5. Enter the Menu by pressing the MENU button on the front panel of the DVR:

- Select the System Set Option
- Choose Program Update
 - If the Firmware is recognized by the DVR, the message “NEW PROGRAM FOUND” appears, and the DVR unit will display a processing percentage.
 - If the Firmware is NOT recognized by the DVR, the message “NEW PROGRAM NOT FOUND” appears, and processing will not continue.

6. Reboot the DVR once complete.

NOTE: This Firmware Upgrade will reset your DVR Unit to FACTORY DEFAULTS. All Settings will be erased.

DVR Firmware Upgrade – Remote Upgrade

1. Download the latest firmware from the Digimerge website at

http://www.digimerge.com/cgi-bin/new_digimerge/product.cgi?uid=215

** Confirm that you have downloaded the correct firmware to match your DVR type (either the DHU504 Firmware or the DHU508/516 Firmware) **

2. On the local PC, navigate to the C:\DGClient\Upgrade folder. Extract the files from the ZIP archive to this location. There will be 3 files:

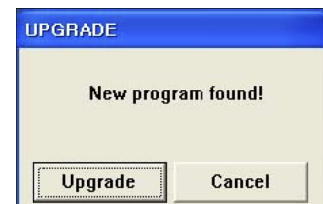
- DHU504 Firmware
 - App-4ch_200609142137.bin
 - Cuboot-4ch.bin
 - Guram-4ch_200609142137.gz
- DHU508/516 Firmware
 - App-8,16ch_200609142137.bin
 - Cuboot-8,16ch_060829.bin
 - Guram-8,16ch_200609142137.gz

3. Start the Web Client Application, and remotely connect to the DVR Unit.

4. Select the 'Firmware Upgrade' option from the Setup Menu.

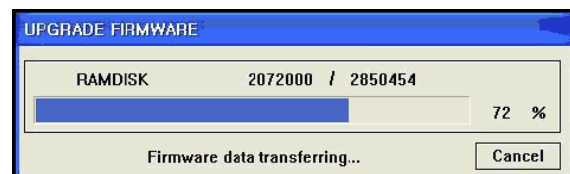


5. If the new firmware is detected, an Upgrade dialogue box will appear. Select the Upgrade button.



6. A status indicator window appears during the upgrade process.

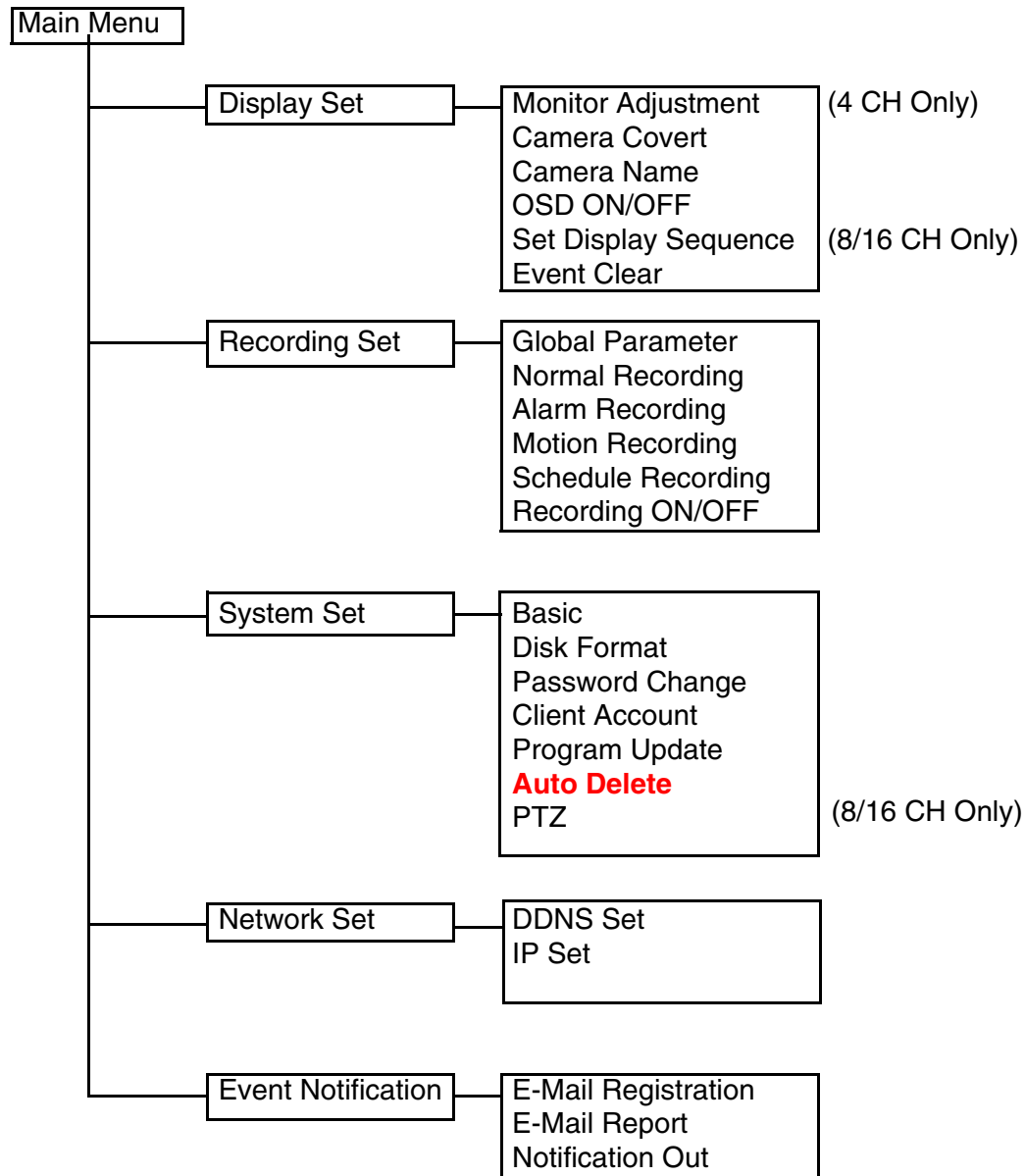
7. Once the update has completed, a success window will appear. Press OK to the Upgrade window.



8. The DVR will need to be rebooted.

NOTE: This Firmware Upgrade will reset your DVR Unit to FACTORY DEFAULTS. All Settings will be erased.

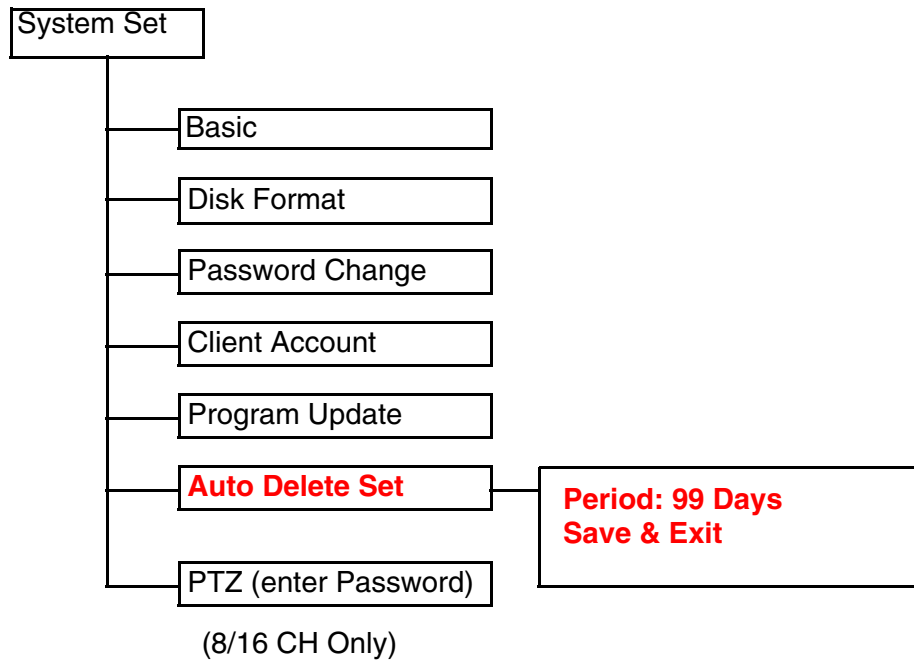
DVR MENU - Addition of the Auto Delete Feature Main Menu Tree



DVR MENU - Addition of the Auto Delete Feature System Set

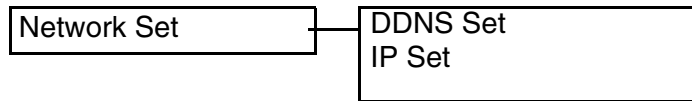
Auto Delete Set

Sets the length of time that data will be held in the hard drive before it is deleted. Press the ↑ and ↓ buttons to highlight the AUTO DELETE SET option, and press the **SEL** button to access the day setting. Use the Number pad to set the option between 0 days to 99 days or None. Choose the Save & Exit option to accept the changes to this option. The default setting is None.



DVR MENU - Change to the Network Set Menu Network Set

This submenu allows you to change the **NETWORK** options for the DVR unit. The options in the DDNS Set menu control access to the DVR using the free DDNS server, and the options in the IP Set section control local network settings for local access to the DVR.



Changes to the DDNS Set Menu

The options in the DDNS Set menu allow the DVR unit to be accessed remotely using the Free DDNS Server and the internet. All information will need to be manually entered based on information from the free DDNS Setup (see page 35 for details). Set the USE DYNAMIC IP option to YES if you will be using the Free DNS Website service to connect to your DVR.

- **DDNS:** Press the ↑ and ↓ buttons to highlight, and press the **SEL** button to set to NO/YES.
- **DOMAIN NAME:** Press the ↑ and ↓ buttons to highlight, and press the **SEL** button to set to enter setup. Use the Numbers and Letters on the front panel of the DVR to set the Domain Name (i.e. To enter the Domain Name DHU504.digimerge.net, just enter DHU504)

DDNS:	YES
Domain Name:	#####
User Name:	#####
Password:	#####
DDNS Status Check	
Save & Exit	

- **USER NAME:** Press the ↑ and ↓ buttons to highlight, and press the **SEL** button to set to enter setup. Use the Numbers and Letters on the front panel of the DVR to set the Domain Name.
- **PASSWORD:** Press the ↑ and ↓ buttons to highlight, and press the **SEL** button to set to enter setup. Use the Numbers and Letters on the front panel of the DVR to set the Domain Name.
- **DNS STATUS CHECK:** Connects to the remote DNS Server to check the Status. Press the ↑ and ↓ buttons to highlight, and press the **SEL** button to test the connection:
 - Checking DDNS NOW. Please wait... it may take a few minutes
 - A Status message will appear indicating a PASS or FAIL on the connection:
 - DDNS Status Check: PASS / FAIL
- **SAVE & EXIT:** Saves any changes made, and exits to the Main Menu. Press the ↑ and ↓ buttons to highlight, and press the **SEL** button to accept the changes.

Changes to the IP Set Menu

The options in the IP Set menu control the local network setup for the Unit. See 45 for additional network setup instructions.

- **DHCP:** Press the ↑ and ↓ buttons to highlight, and press the ←→ buttons to set to NO/YES. Set this option to YES to allow the unit to get Network information from the Router; set this option to NO if information will be manually assigned to the DVR unit.
- **IP ADDRESS:** Press the ↑ and ↓ buttons to highlight, and press the **SEL** button to enter setup. Use the Numbers on the front panel of the DVR to set the IP address.
- **GATEWAY:** Press the ↑ and ↓ buttons to highlight, and press the **SEL** button to enter setup. Use the Numbers on the front panel of the DVR to set the Gateway address.
- **NETMASK:** Press the ↑ and ↓ buttons to highlight, and press the **SEL** button to enter setup. Use the Numbers on the front panel of the DVR to set the Net Mask.
- **DNS SERVER:** Press the ↑ and ↓ buttons to highlight, and press the **SEL** button to enter setup. Use the Numbers on the front panel of the DVR to set the DNS Server address.
- **DVR PORT:** Press the ↑ and ↓ buttons to highlight, and press the **SEL** button to enter setup. Use the Numbers on the front panel of the DVR to set the DVR Port to **2000 (default)** or any other port desired between 2001 ~ 65535 that is not currently in use.
- **WEBSERVER PORT:** Press the ↑ and ↓ buttons to highlight, and press the **SEL** button to enter setup. Use the Numbers on the front panel of the DVR to set the Webserver Port to **0080**.
- **SAVE & EXIT:** Saves any changes made, and exits to the Main Menu. Press the ↑ and ↓ buttons to highlight, and press the **SEL** button to accept the changes.

DHCP:	NO
IP Address:	###.###.###.###
Gateway:	###.###.###.###
Netmask:	###.###.###.###
DNS Server:	###.###.###.###
DVR Port:	2000
Webserver Port:	0080
Save & Exit	

WEB CLIENT SOFTWARE - Addition of Remote Playback of Motion Events Detail Tabs

Displays system information:

1. **Log** - Shows login, logout and connection details.

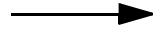
Log	Event	Info	Status
06:27:2006 12:42:06	remote login	admin 216.234.45.2	
06:27:2006 12:41:42	remote logout	admin 192.168.0.103	
06:27:2006 12:38:33	remote logout	216.234.45.2	

2. **Event** - Displays camera event messages: Motion, Alarm, Sensor and Video Loss.

Log	Event	Info	Status
06:22:2006 12:44:02	motion	system 01	
06:22:2006 12:43:15	motion	system 01	
06:22:2006 12:39:45	motion	system 01	

NOTE: Double clicking on a MOTION event will display a list of all events, and double clicking on an event will start the playback of the previously recorded video.

Log	Event	Info	Status
08:22:2006 20:55:05	video loss	system 01	02 03 04 05 06 07 08 09 10 11 12 13 14 15 16
08:21:2006 22:40:44	video loss	system 01	02 03 04 05 06 07 08 09 10 11 12 13 14 15 16
08:21:2006 21:02:25	motion	system 01	
08:21:2006 21:01:45	motion	system 01	
08:21:2006 20:59:36	motion	system 01	
08:21:2006 20:51:45	motion	system 01	
08:21:2006 20:50:45	motion	system 01	
08:21:2006 20:50:59	motion	system 01	
08:21:2006 20:30:04	motion	system 01	
08:21:2006 20:26:38	motion	system 01	
08:21:2006 20:26:37	motion	system 01	
08:21:2006 20:26:27	video loss	system 02	03 04 05 06 07 08 09 10 11 12 13 14 15 16
08:21:2006 20:22:59	motion	system 01	
08:21:2006 20:22:52	motion	system 01	
08:21:2006 20:19:32	motion	system 01	
08:21:2006 20:19:31	motion	system 01	
08:21:2006 20:17:27	video loss	system 02	03 04 05 06 07 08 09 10 11 12 13 14 15 16
08:21:2006 20:15:06	motion	system 01	
08:21:2006 20:15:05	motion	system 01	
08:21:2006 20:14:59	video loss	system 02	03 04 05 06 07 08 09 10 11 12 13 14 15 16
08:21:2006 20:07:51	motion	system 01	
08:21:2006 20:07:50	motion	system 01	
08:21:2006 20:07:48	video loss	system 02	03 04 05 06 07 08 09 10 11 12 13 14 15 16
08:18:2006 16:14:33	video loss	system 01	02 03 04 05 06 07 08 09 10 11 12 13 14 15 16
08:18:2006 16:14:31	motion	system 02	07
08:18:2006 16:14:30	motion	system 02	07



3. **Info** - Displays system information retrieved from the DVR.

Log	Event	Info	Status
Free Disk Space : 148 Gbytes [99]			
FPGA version : 200511211240			
APPI version : 200606071546			

4. **Status** - Indicates the status of the DVR and Cameras.

Log	Event	Info	Status

WEB CLIENT SOFTWARE - Change to the Remote Setup / System Setup Menu

Remote Setup - System Set Tab

The System Set controls some of the general functionality of the remote DVR:

- **User Accounts** - Add up to 5 user accounts for remote access to the DVR unit.
- **PTZ Camera Model Setup** - Configuration for PTZ enabled cameras.
- **Sensor IN Setup** - Configuration for any external sensor devices connected to the remote DVR (such as Door or Window Sensors) to a maximum of 4.
- **Alarm OUT Setup** - Configuration for Alarm type devices (maximum of 4).
- **Auto Delete Mode** - Sets the time period for Auto Delete (how long the DVR unit will retain recorded video data). This dropdown can be set between 0 Days to 99 Days, or to None.
- **PTZ Controller** - Settings for the PTZ Controller
 - **ID**: Set the ID Dropdown between 1 and 6,
 - **PTZ Model**: Only option available is TB-CN SERIES
 - **Baud Rate**: Set to 2400, 4800 or 9600

The screenshot displays the 'Remote Setup - System' window with the 'System Set' tab selected. The interface is organized into several sections:

- User Account:** A table with 5 rows for User 1 through User 5. Each row contains fields for ID, Password, and Confirm, along with 'Add', 'Set', and 'Del' buttons.
- PTZ Camera Model:** Fields for DVR CH No. (1), ID (Off), Protocol (PELCO-P), and Baud Rate (2400 bps).
- Sensor In:** Four dropdown menus for Sensor 1 through Sensor 4, all currently set to 'None'.
- Alarm Out:** Fields for Buzzer, Alarm 1 (Off), Alarm 2, Alarm 3, and Alarm 4.
- Auto Delete Mode:** A 'Period' dropdown set to 'None' days.
- PTZ Controller:** Fields for ID (Off), PTZ Model (TB-CN SERIES), and Baud Rate (9600 bps).

At the bottom right, there are 'Save & Exit' and 'Close' buttons.

It's all on the web

 **Product Information**

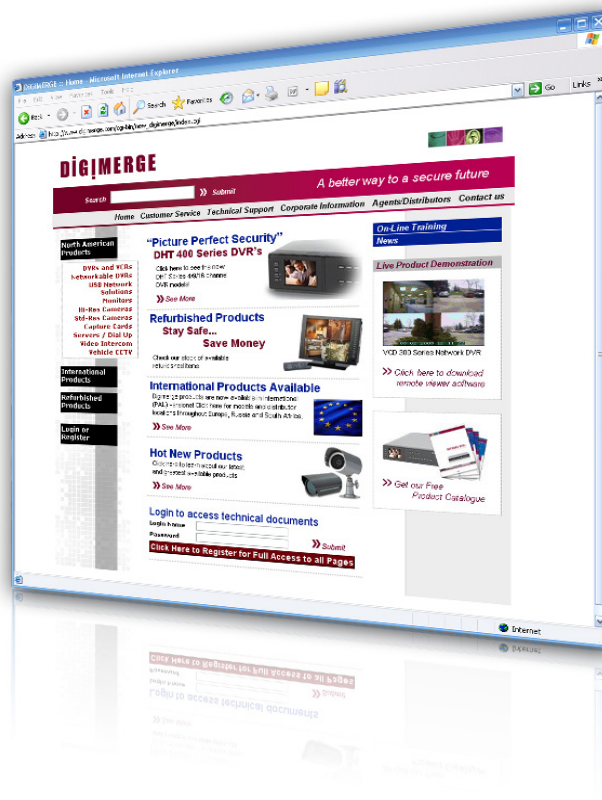
 **Specification Sheets**

 **User Manuals**

 **Software Upgrades**

 **Quick Start Guides**

 **Firmware Upgrades**



VISIT
www.digimerge.com

www.digimerge.com

Digimerge Technologies Inc.