

DIGIMERGE

Service Bulletin

Bulletin No: 07-1211-1

Date: November 12, 2007

Product : DHU500 Series DVRs

Purpose: Instructions for CD backup and playback

CD Media required: CD-R or CD-RW

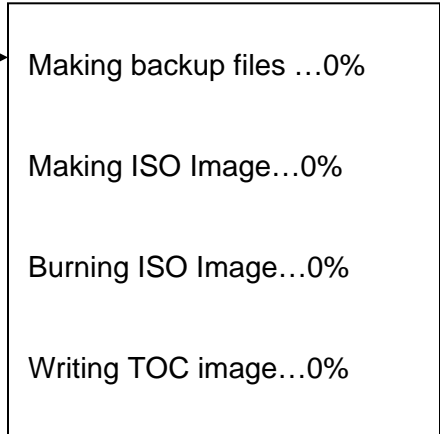
Procedures:

1. Open the CD drive by pressing the eject button. Place the CD-R/RW in the drive and press the eject button to close it.
2. Press **Search** on the front panel of the DHU500 or on the IR remote.
3. Arrow down to **Backup** and press **SEL**
4. Arrow down to **From** and press **SEL**
5. Use the NUMBER keys (0-9) on the front panel of the DVR to change the date and time Scroll to the right to go to the next number. Press **SEL** when finished changing the date and time.
6. Arrow down to **To** and press **SEL**.
7. Use the NUMBER keys (0-9) on the front panel of the DVR to change the date and time. Scroll to the right to go to the next number. When finished, press **SEL**.
8. Arrow down to **Channel** and press **SEL**. By default, only Channel 1 is selected.
9. To add more channels to the backup scroll down to the backup channel number and press the right arrow key to change the selection to **YES**. Scroll down to the next channel you want to add to the backup and press the right arrow key to change to it to YES. After selecting all the channels, scroll down to **Save and Exit** and press **SEL**.
10. Scroll down to **Calculate Backup Size** and press **SEL**. This will show the Required Space for the backup and the Available Space from the CD. If the Required Space exceeds the Available Space the backup will not go through. Make sure the Required Space is smaller than the Available Space.

BACKUP DEVICE: CD-R
DEVICE FORMAT
FILE FORMAT: EXCLUSIVE
FROM: 01-01-2006 01:02:03
TO: 01-01-2006 04:05:06
CHANNEL: 1
CALCULATE BACKUP SIZE
TRANSFER

Available Space: 0MB
Required Space: 0MB

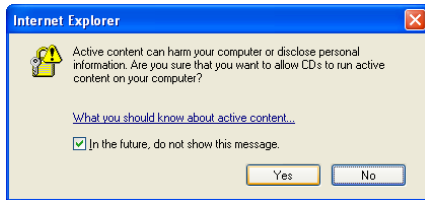
11. Arrow down to **Transfer** and press **SEL**
12. The screen will show the backup process.
13. The CD door will open after the backup is finished.



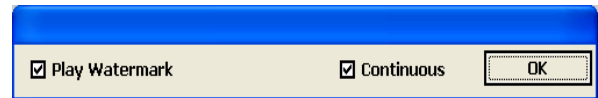
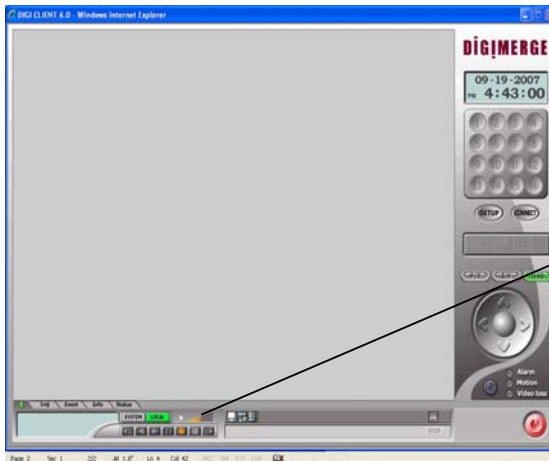
NOTE: The Exclusive File Format is the proprietary format of the DHU500. In Exclusive format you can record all channels and the video is date stamped. The viewer program (bk_play.exe) is also copied onto the CD.
 The AVI File Format can be played using Windows Media Player but the video is not date stamped. In AVI format only one channel at a time can be backed up.

Playing a backup CD in a PC

1. Place the CD-R/RW in the CD-drive of the PC
2. Open your CD drive and click on the **bk_play.exe** file
3. You will get the message below. Press **OK**



4. The DigiClient 6.0 software will open up.
5. Using your mouse, click the **Playback (>)** button
6. Click **OK**



7. A Playback window will list the files from the CD. Highlight the date and time and press **Start**

Playback - Start Time				
Start Time	Selected Time	End Time		
1	2007	1	11	08:56:26 - 08:56:27
2	2007	1	11	08:56:29 - 09:00:02
3	2007	1	11	09:00:04 - 09:00:10
4	2007	1	11	09:00:11 - 09:01:11

8. The backup file will play in the DigiClient 6.0 window.
9. Use the playback buttons to control the playback (e.g. rewind, fast forward, pause etc).
10. To close DigiClient 6.0 click on the red **Quit** button on the bottom right.

