

Upgrading IP Camera Firmware

Copyright

© 2017, FLIR Systems, Inc.

All rights reserved worldwide. Names and marks appearing herein are either registered trademarks or trademarks of FLIR Systems and/or its subsidiaries. All other trademarks, trade names or company names referenced herein are used for identification only and are the property of their respective owners.

Document identity

Publ. No.: LX400091
Commit: 41893
Head: 41893
Language: en-US
Modified: 2017-04-04
Formatted: 2017-04-04

Website

www.flir.com/security/pro

Technical Support

1-800-254-0632

Customer Service

1-866-344-4674


Legal disclaimer

Specifications subject to change without further notice. Camera models and accessories subject to regional market considerations. License procedures may apply. Products described herein may be subject to US Export Regulations. Please refer to exportquestions@flir.com with any questions.

1 Upgrading IP Camera Firmware: Individual Cameras

Download and install the latest firmware for your IP cameras to improve device security. This firmware upgrade can be done by downloading the firmware file to your computer and using the ConfigTool to upgrade your cameras.

The following procedure is used for upgrading a single IP camera. This upgrade method is intended for cameras that **do not** use the default username (**admin**) and password (**admin**).

	NOTE
<ul style="list-style-type: none">• IP cameras connected directly to a FLIR NVR will be protected as long as the NVR has the latest firmware installed. It is always recommended to upgrade IP camera firmware to the latest available version.• If you have multiple FLIR IP cameras of the same model number that use the default username (admin) and password (admin), you have the option to upgrade the firmware for these cameras simultaneously. Refer to the document "Upgrading IP Camera Firmware: Multiple Cameras" available at www.flir.com/securityinfo.	

Prerequisites:

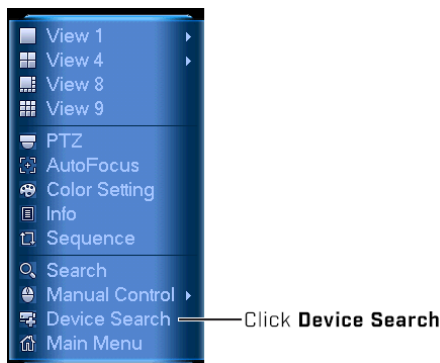
- You must install **ConfigTool** on a computer in the same network as your IP cameras. Download the application from www.flir.com/securityinfo.

To determine the correct firmware file for your camera:

OPTION 1: Check the model number using your FLIR NVR

If your IP camera is managed by your FLIR NVR (i.e., directly connected to the back panel or connected over the LAN), follow the steps below to locate your camera model number.

1. From the live viewing screen, right-click to open the Quick Menu. Click **Device Search**.



- Cameras managed through the NVR are shown under **Added Device**. The model number is displayed under the **Device Name** column.



OPTION 2: Check the rating label on your camera

The rating label will state the camera model number beside **Model No.** The position of the rating label will vary depending on the type of camera you have.




To upgrade IP camera firmware:

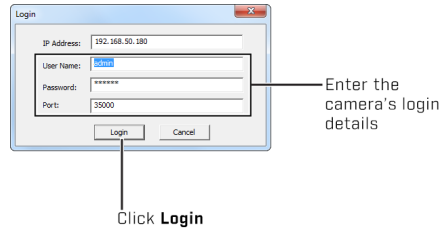
- Download the firmware upgrade for your IP cameras from www.flir.com/securityinfo on a computer in the same network as your cameras.
- Extract the contents of the **.zip** file.

NOTE

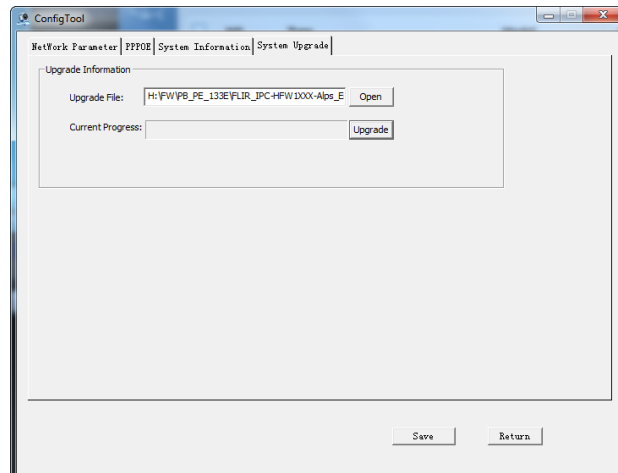
Ensure you have also downloaded and installed **ConfigTool** on the same computer. You can download the application from www.flir.com/securityinfo.

- Double-click the ConfigTool icon () once installation is complete. The ConfigTool launches and displays the Device List menu. You can use this menu to search for IP cameras on the network by model number.

4. Select **IPv4** from the dropdown next to **IP Version**, then click **Refresh**.
5. Select the camera you want to upgrade, then click **Login**.
6. Enter the username, password and port number for the selected IP camera, then click **Login**.



7. Click the **System Upgrade** tab.
8. Click **Open** to select the **.bin** firmware file you extracted in step 2, then click **Upgrade**.



WARNING

DO NOT POWER OFF THE CAMERA OR DISCONNECT THE POWER CABLE DURING FIRMWARE INSTALLATION.

You can view the progress of the firmware upgrade on screen. Once finished, the camera will automatically restart.