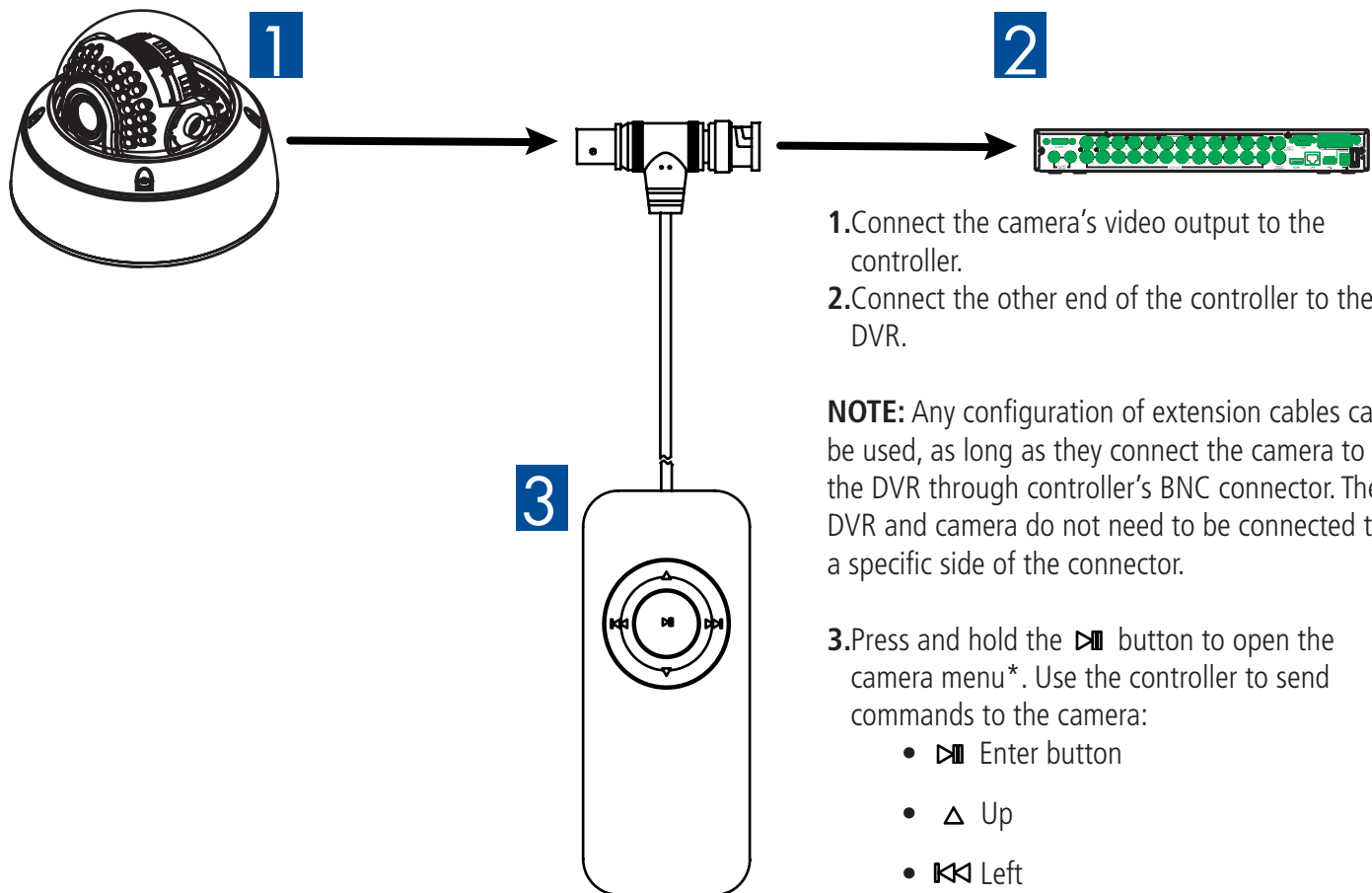


This UTC Controller allows you to control the OSD (on-screen display) menu over the video cable on cameras that support UTC (Pelco-C Protocol).



UTC controller is not intended for outdoor use.

To control the camera OSD menu:



1. Connect the camera's video output to the controller.
2. Connect the other end of the controller to the DVR.

**NOTE:** Any configuration of extension cables can be used, as long as they connect the camera to the DVR through controller's BNC connector. The DVR and camera do not need to be connected to a specific side of the connector.

3. Press and hold the button to open the camera menu\*. Use the controller to send commands to the camera:

- Enter button
- Up
- Left
- Right
- Down

\*See the instruction manual for your camera for details on specific button/menu functions.

**NOTE:** If the UTC controller stops working, replace the battery with a fresh CR2025 battery with the positive side facing away from the buttons.